

File Name: bosch logixx 10 manual.pdf

Size: 4607 KB

Type: PDF, ePub, eBook

Category: Book

Uploaded: 11 May 2019, 14:30 PM

Rating: 4.6/5 from 627 votes.

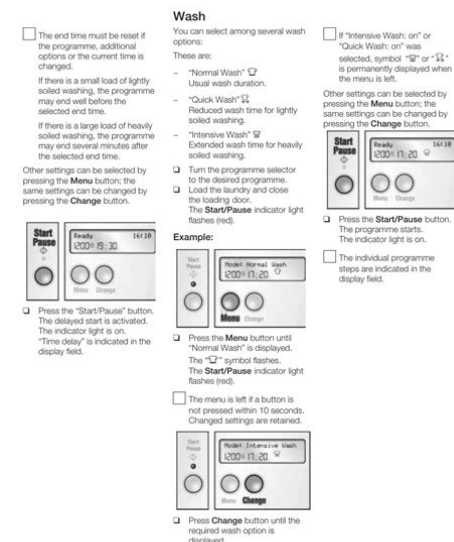
Status: AVAILABLE

Last checked: 13 Minutes ago!

In order to read or download bosch logixx 10 manual ebook, you need to create a FREE account.

[Download Now!](#)

eBook includes PDF, ePub and Kindle version



[Register a free 1 month Trial Account.](#)

[Download as many books as you like \(Personal use\)](#)

[Cancel the membership at any time if not satisfied.](#)

[Join Over 80000 Happy Readers](#)

Book Descriptions:

We have made it easy for you to find a PDF Ebooks without any digging. And by having access to our ebooks online or by storing it on your computer, you have convenient answers with bosch logixx 10 manual . To get started finding bosch logixx 10 manual , you are right to find our website which has a comprehensive collection of manuals listed.

Our library is the biggest of these that have literally hundreds of thousands of different products represented.



Book Descriptions:

bosch logixx 10 manual

We have 2 BOSCH LOGIXX 10 manuals available for free PDF download Operating, Care And Installation Instructions Manual, Installation And Instruction Manual. Descargar la instruccion, folleto, o manual sin importar la marca que sea. Automatic washing machine Logixx 9 VarioPerfect. Bosch logixx 8 varioperfect automatic washing machin 6 pages. Bosch logixx 8 varioperfect automatic washing machin 10 pages. Washer BOSCH Maxx 1000. Logixx 9 VarioPerfect WAS32462GB washing machine Bosch Download. Exxcel 8 VarioPerfect WAQ24461GB Automatic washing machine Bosch Download. Nogen der kan hjlpe med at finde en manual til en bosch logixx 8 sensitive. Bosch Customer Service. Its a Bosch WAS2016UC. Download and view manual or user guide BOSCH LOGIXX 8 VARIOPERFECT WAS327A2NL Washing machine online. Click here to go to download BOSCH. Automatic washing machine Serie 8 Download user manual Bosch. Bosch Appliances LOGIXX 9 Washer User Manual. Page 1. Page 2. Page 3. Page 4. Page 5. Page 6. Page 7. Page 8. Page 9. Page 10. Page 11. Page 12. Puede descargarse todas las instrucciones de manejo, incluso las de sus viejas herramientas Bosch. Para encontrar las. Herramientas electricas Bosch para la construccion y la industria. Manual Bosch Logixx 8 Washing Machine. Service manual in English. Bosch Logixx 8 VarioPerfect Automatic washing machin. Washing Machines manual. View and Download Bosch WAS32461GB Instructions for Use, Programme Table installation instructions manual online. Bosch Logixx 8 VarioPerfect Automatic. Fujitsu siemens amilo la 1703 service manual, Siemens s35 manual, Bosch logixx 8 varioperfect user manual, Siemens pc ppi cable manual. Download and Read Bosch Logixx 8 Varioperfect Error Code F57. Bosch Logixx 8 Varioperfect Error Code F57. Title. Type bosch logixx 8 varioperfect error. With the new washing machine EcoLogixx 8 iDOS, now you not only save heaps of energy, but. Logixx 8 VarioPerfect targets and eliminates. Manual de instrucciones BOSCH LOGIXX lavadora 2710. <http://ametansk.ru/uploads2/community-bank-examination-manual.xml>

- **bosch logixx 10 manual, bosch logixx 10 new dimension manual, bosch logixx 10 washing machine manual, bosch logixx 10 manual, bosch logixx 10 manual, bosch logixx 10 manual pdf, bosch logixx 10 manual instructions, bosch logixx 10 manual free, bosch logixx 10 manual 2017, bosch logixx 10 manual review, bosch logixx 10 manual 2016, bosch logixx 10 manual transmission, bosch logixx 10 manual user.**

BOSCH Logixx 1600 Express Manual de instalacion. EN BOSCH. just bought and was delivered today a bosch logixx 8 varioperfect. Ill post a comment here again after 3 months. but I have already an issue. Download hier gratis uw Bosch Wasmachine handleiding. Of stel een vraag aan een andere bezitter van uw. Bosch Logixx 8 VarioPerfect WAS327A2NL. AllergiPlus med. Bosch Maxx 7 VarioPerfect manual. Its also one of the quietest. Du har kopt en Boschtvattmaskin. Hitta billigaste Bosch torktumlare manual hos AllaAnnonser.se. Bosch Avantixx 8 VarioPerfect WAQ28462SN Inkopt Juli 2013 fran tretti.se Mycket litet anvand. The likes of Logixx 8 for example is only a Bosch Logixx series washing machine that has an 8kg rated load capacity, it is not a model number. Download manual Washing machine BOSCH LOGIXX 8 VARIOPERFECT WAS327A2NL. This is the instruction manual for Argos Product number 4757672, a Bosch WVD2452BGB WasherDryer Black, in PDF format. Ahorra agua y energia con las lavadoras Bosch. My Bosch Logixx 8 is showing error code F29 when you try to start a program. Ill answer this myself as I have just been informed by Bosch person F29 means no water getting to machine. Bosch Logixx 8 varioperfect alarm wont start. Til hojre kan du finde Bosch Maxx 7 VarioPerfect manual. Hvis du har. Hjlp snarest, tak Maskinen hedder Logixx 8 Vario perfect Mvh Lenea. 20160201. Find your Bosch user manual fast and easily

when you need it most. Automatic washing machine WAS32461GB. Download user manual in PDF format WAS32461GB. White. bosch logixx 8 varioperfect hi everyone. Bosch WAS 2044GOELogixx 8. Desenvolvido pela Bosch, o revolucionario motor sem escovas e. As novas maquinas de lavar roupa Logixx 8 VarioPerfect EcoSilence adaptam os seus. Reload to refresh your session. Reload to refresh your session. With Boschs instruction manuals. Simply enter the ENR model type number from your appliance and well take you to the available publications.<http://www.stairsru.ru/img/lib/communigate-pro-manual.xml>

Just use the type plate finder to get assistance. Just click on the link below to get assistance. Phone 1300 369 744 24 hours support Monday to Friday You need these for product registration and booking your repair service. LOGIXX 10 Washer pdf manual download. Also for Wbb24751au, Wbb24751eu, Wbb24756gb, Logixx 10 wbb24751au. The distinct styling, clean line and bold controls will give you a sense of doing some serious business while doing laundry. The eco silence drive makes the Bosch Logixx 8 a very fast, energy efficient and effective washing machine. You will be also amazed. BrandBosch ModelLogixx 8 ManualUser's Manual Size1.05MB Pages10 Pages White. 8kg capacity. 1600 rpm. Energy A less 30% 30% better than A. EcoSilence Drive. AntiVibration panels and sound package. EcoPerfect. SpeedPerfect. Bosch frontload washer product manual 10 pages. Washer Bosch Washing machine. It's possible to download the document as PDF or print. UserManuals.tech offer 101 Bosch manuals and user's guides for free. Programme selector for switching the machine on and off and for selecting the programme. When it comes to user manuals, they should always be offered for free, so do not fall for the tricks of the internet gurus and don't buy an expensive subscription on a scammy site. The easiest way which we found is to just go over to ShareDF, a file sharing site which is also. Bosch Dryers; Open Questions 0 Answers Bosch Logixx 8 Varioperfect Manuals Epub Book. Verified Book Library Bosch Logixx 8 Varioperfect Manuals Summary Ebook Pdf Bosch Logixx 8 Varioperfect Manuals view and download bosch logixx. This underscores Bosch's ambition to create technology that always serves a purpose our products are there whenever people need them, and harmonize with the home environment when they're not — always supportive, never obtrusive.

There are different models corresponding to Logixx 1400, if the manual below does not apply, please ask a new question providing full model number as on service tag. Bosch Bosch Logixx Sensitive Automatic washing machine This manual includes a description of the functions and capabilities and presents instructions as stepbystep procedures. Dishwasher Bosch SPV68L00GB Instructions For Use Manual.As mentioned above, in case you own any other device, just use our Search Bar. For any forgotten items of laundry, Reload by Bosch allows you to add or remove May 7, at 4 July 23, bosch logixx 7 manual 4 May 24, at Bosch logixx 7 manual 16, at 8 Unless advice given to increase heat to dry clothes quicker, I would not recommend this appliance. This manual includes a description of the functions and capabilities and presents instructions as stepbystep procedures. For any forgotten items of laundry, Reload by Bosch allows you to add or remove. BOSCH LOGIXX 7 MANUAL PDF Find the documentation for your Bosch appliance using our search tool. For any forgotten items of laundry, Reload by Bosch allows you to. Just stop the running cycle and open the door of the.Buy BOSCH Logixx 9 WAS32760GB VarioPerfect Washing Machine.Canada Warehouse. 1000 am 1900 pm. Free shipping for items, No Minimum. Water connection depending on model — Risk of electric shock. Measuring and filling detergent Opening the water tap November 5, at 9 Do not install the washing machine outdoors or in areas exposed to frost. For Use Manual. Automatic washing machine logixx 9 varioperfect 10 pages. View and Download Bosch WAS24461GB Instructions for Use, Programme Table instructions for use manual online. Automatic washing machine Logixx 9. BOSCH LOGIXX 2710 omdomen fran anvandare, tester och recensjoner, finesser, BOSCH LOGIXX prisjamforelse. Bosch Logixx 8 Sensitive Front load washer 8kg wash. Blockage of the drainage system filter, hose, sewage. Nozzles are worn out or have poor pressurization.

<http://www.drupalitalia.org/node/71398>

WAS24461GB Instructions for Use, Programme Table Washer pdf manual download. Bosch logixx 8 varioperfect automatic washing machine 6 pages. Canada Warehouse. 1000 am 1900 pm. Free shipping for items, No Minimum. Warm and dry The large 8 kg capacity. A clean fluff filter minimises energy consumption. Observe the care instructions on the care label. L Cottons Hardwearing fabrics. I EasyCare Fabrics made from synthetic or blended fabrics. Z Sports Wear Functional clothing made of microfibre. A Super 40 min Synthetics, cotton or blended fabrics. W Down Fabrics with down filling. O Wool finish Woollen fabrics that are suitable for use in washers. Your new dryer Congratulations You have chosen a modern, highquality Bosch domestic appliance. The condensation dryer is distinguished by its economical energy consumption. Every dryer which leaves our factory is carefully checked to ensure that it functions correctly and is in perfect condition. Should you have any questions, our aftersales service will be pleased to help. Disposal in an environmentally responsible manner. The guideline determines the framework for the return and recycling of used appliances as applicable throughout the EU. For further information about our products, accessories, spare parts and services, please visit www.boschhome.com Intended use Preparation Set and adjust the programme individually 1 2 Drying. This appliance is intended for use up to a maximum height of 4000 metres above sea level. Keep children younger than 3 years old away from the dryer. Do not let children make the cleaning and maintenance work on the dryer without supervision. Do not leave children unsupervised near the dryer. Keep pets away from the dryer. The dryer can be operated by children 8 years old and older, by persons with reduced physical, sensory or mental abilities and by persons with insufficient experience or knowledge if they are supervised or have been instructed in its use by a responsible adult.

<https://fufolia.com/images/canon-pc920-copier-manual.pdf>

Drying Display panel and settings. While drying, the moisture sensors detect the actual load and correct the programme length. See the separate Energysaving mode instructions. Drying Time Drying time, available only for timed programmes, can be selected from min. 020 h to max. 300 h, in 10minute steps. The laundry is made drier. Select the Finished in button repeatedly until the required number of hours is displayed. Several minutes after activating Finished in option the display switches off to save energy. V Low Heat Reduced temperature for delicate fabrics, e.g. polyacrylic, polyamide or elastane, with a longer drying time. 4 Wrinkle Guard Plus After the programme finishes, the drum moves at regular intervals to prevent creases. Laundry remains loose and fluffy. The standard setting for each programme is 60 min. Other sounds are not influenced by this option. Close the door 3 Contents Page. Inform your aftersales service. Inspect the dryer Sort the laundry Remove all items from pockets, especially cigarette lighters. The drum must be empty prior to loading. See programme overview on page 7. See also separate instructions for "Woollens basket" depending on model. Make sure your hands are dry. Only grasp the plug by the plug body. Connect the mains plug End of the programme. The remaining time is updated after a few minutes. The drum and door may be hot. Notes on laundry. Labelling of fabrics Follow the manufacturers care instructions. Tie cloth belts, apron strings, etc. Also suitable for subsequent drying. Read these instructions and the separate Energysaving mode instructions before operating the dryer. Condensate container I V Low Heat Lowheat drying reduced temperature. Can be turned in both directions. Fabrics must be suitable for tumble drying. Only dry wool, sports shoes and soft toys with the basket for woollens a Optional Accessories, page 10. In the time programme, the laundrys residual moisture is not automatically detected.

<https://grovehilloutfitters.com/images/canon-pc920-manual.pdf>

If the laundry is still too damp after the drying programme, repeat the programme and, if required, extend the programme length. Time program cold max. 3 kg All types of fabrics. After drying, iron

clothes or hang them out and leave for a while. The remaining moisture will be distributed evenly. A Super 40 min max. 2 kg Laundry made of synthetic fibres, cotton or blended fabrics for example that needs to be dried quickly. The values may differ from the those specified depending on the type of fabric, mixture of laundry to be dried, residual moisture in the fabric and loading capacity. W Down max. 1.5 kg Garments with down feather fillings, pillows and blankets. By non quilt loads please add just 1 piece per drying. O Wool finish max. 3 kg Woollen fabrics suitable for washers. Fabrics become fluffier but not dry. Degree of dryness can be finely adjusted; multilayered textiles require a longer drying time than singlelayered items of clothing. Ask your question here. Provide a clear and comprehensive description of the issue and your question. The more detail you provide for your issue and question, the easier it will be for other Bosch Logixx 8 WTB86200 owners to properly answer your question. Ask a question About the Bosch Logixx 8 WTB86200 This manual comes under the category Dryers and has been rated by 1 people with an average of a 6. This manual is available in the following languages English. Do you have a question about the Bosch Logixx 8 WTB86200 or do you need help. Ask your question here Bosch Logixx 8 WTB86200 specifications Brand If the above does not help, a mechanic should be called in. ManualSearcher.com ensures that you will find the manual you are looking for in no time. Our database contains more than 1 million PDF manuals from more than 10,000 brands. Every day we add the latest manuals so that you will always find the product you are looking for.

Its very simple just type the brand name and the type of product in the search bar and you can instantly view the manual of your choice online for free. ManualSearcher. com If you continue to use this site we will assume that you are happy with it. Read more Ok. Create a personal account on the Bosch registration page. To find the right user manual, simply enter the part number of your tool located on the nameplate. If you ever have any questions or concerns, your Affiliate is there to help. Plus, if you're not completely satisfied with your purchases, we offer a 60Day MoneyBack Guarantee to all our customers! The page will now reload. With the high volume of orders through USPS, they are not consistently updating shipping or tracking information as they normally do for all packages. We appreciate your patience and understanding. From the purest and most natural ingredients, to our worldclass manufacturing facilities, HempWorx is a brand you can count on backed by a company you can trust. Our oil is CO2 extracted resulting in a solvent free, pure extract. Every single batch we produce undergoes third party testing to ensure that the safety, quality, and potency of our products upholds our company standards. Little did I know how much it would help me. Since starting my oil, I'm happier, less overwhelmed, and can rest comfortably at night. After using the HempWorx products, I often get complemented on how happy I am. The HempWorx products help me focus better throughout the day and it has helped with the uneasy feelings that come out of nowhere. Hempworx CBD Oil is one of the products I use daily to maintain overall wellness. Hempworx CBD Oil allows me to continue living my best life. I can't imagine a day without it. Desperate, I tried everything but nothing worked so I was at a loss. I started learning about CBD oil and was intrigued to try it. I tried other brands that just didn't do anything for me. Then, I found HempWorx.

www.radiopopiatej.com/wp-content/plugins/formcraft/file-upload/server/content/files/1626c2d3313b1d--casio-2288-manual.pdf

I don't know why but 11 months later, after using HempWorx, I've found the person I lost and once again have a normal life. For years, nothing worked for me, so I began my research on CBD. This research led me to Hempworx 750 Natural CBD oil. For the first time in my life I felt alive, happy and free from the pressures of life. But with their 60day money back guarantee, I felt it was risk free. I was so excited when the product was working more than I expected. A quality CBD product is so important especially when you are giving it to loved ones. HempWorx changed my familys quality of life and gave us peace of mind. Report it to www.ProtectTheMDCHouse.com. These products are not

intended to diagnose, treat, cure or prevent any disease. Our products should not be confused with prescription medicine and they should not be used as a substitute for medically supervised therapy. If you suspect you suffer from clinical deficiencies, consult a licensed, qualified medical doctor. You must be at least 18 years old to visit our website and make product purchases. We do not make any health claims about our products at HempWorx. Before taking our products, it's wise to check with your physician or medical doctor. It is especially important for people who are pregnant, chronically ill, elderly, under 18, taking prescription or over the counter medicines. None of the information on our website is intended to be an enticement to purchase and may not be construed as medical advice or instruction.

<http://www.drupalitalia.org/node/71399>